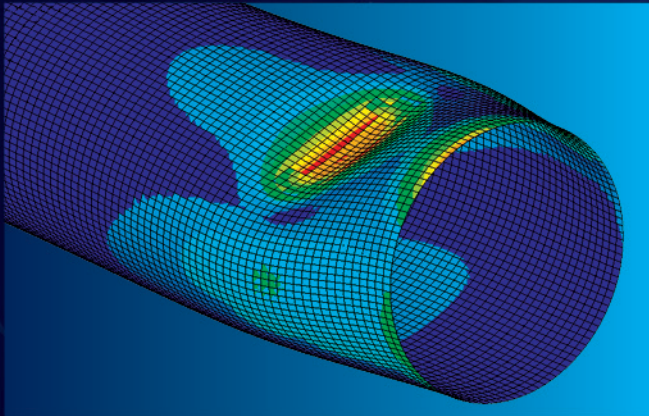


EMERGENCY PIPELINE REPAIR SERVICES

SERVICES

- EPR Engineering Assessment
- Pipeline Integrity Management
- Pipeline Decommissioning & Recommissioning
- Isolation & Repair
- Tooling (RIT)
- Underwater Welding & Clamping
- Clamp & Sleeve Installation
- Hot Tapping



BENEFITS

- Planned & Informed Response
- Minimised Production Downtime
- Minimised Pollution & Environmental impact
- Meets Insurers / Underwriters Requirements
- Adherence to Legal Requirements