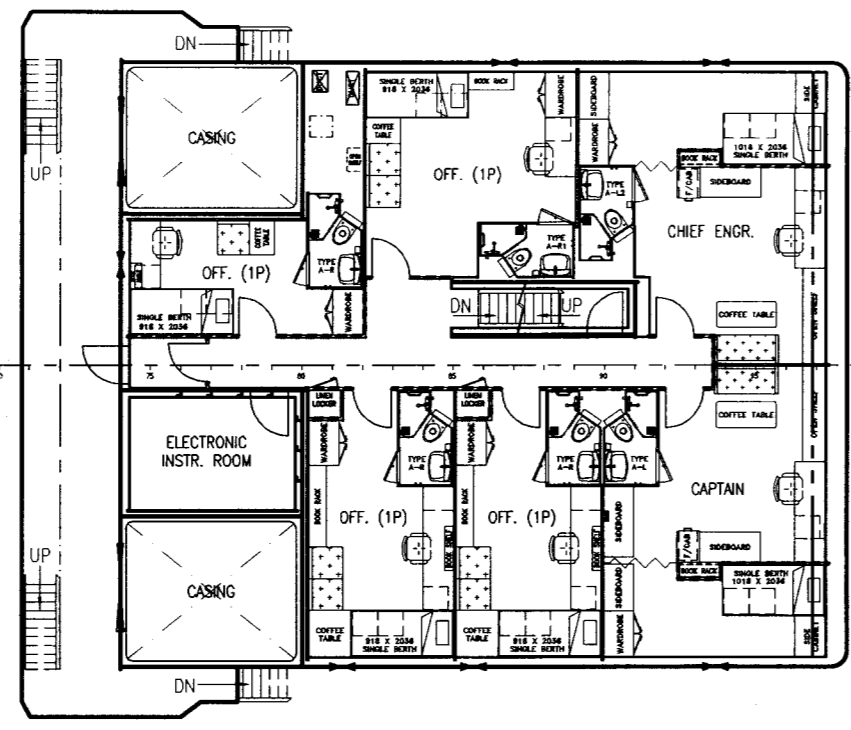
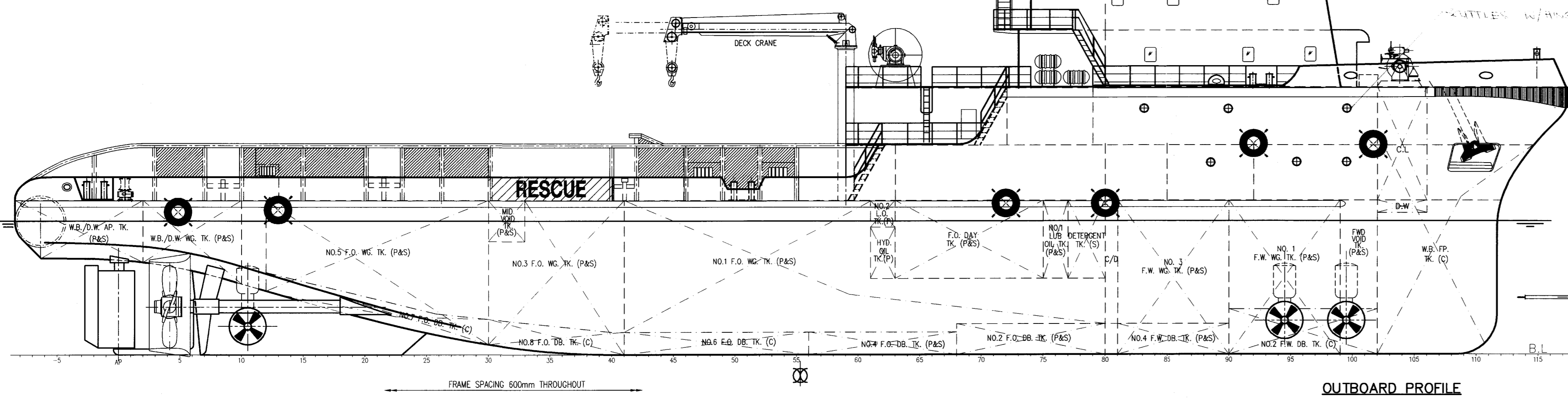


BRIDGE DECK PLAN



OFFICER DECK

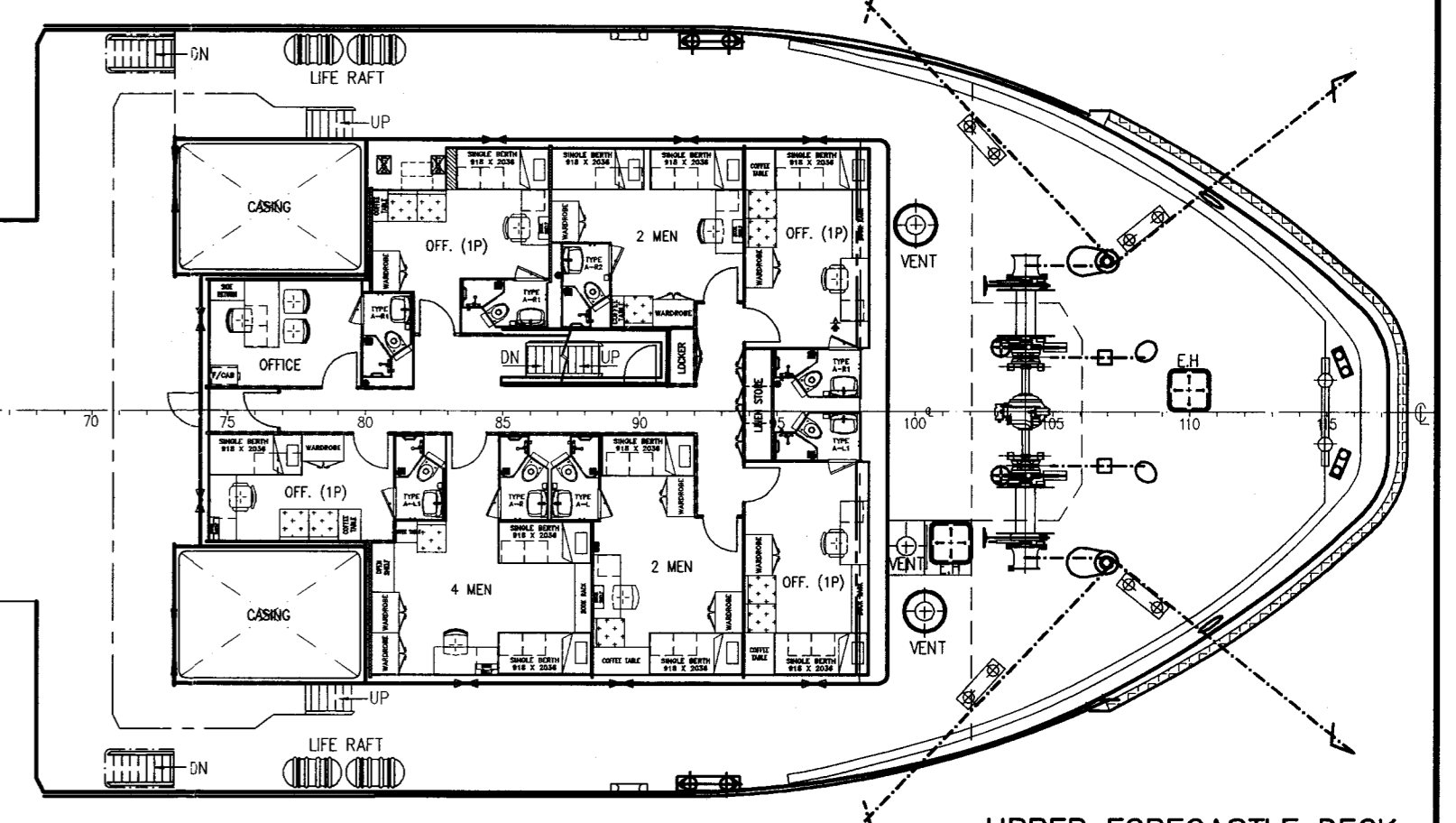


OUTBOARD PROFILE

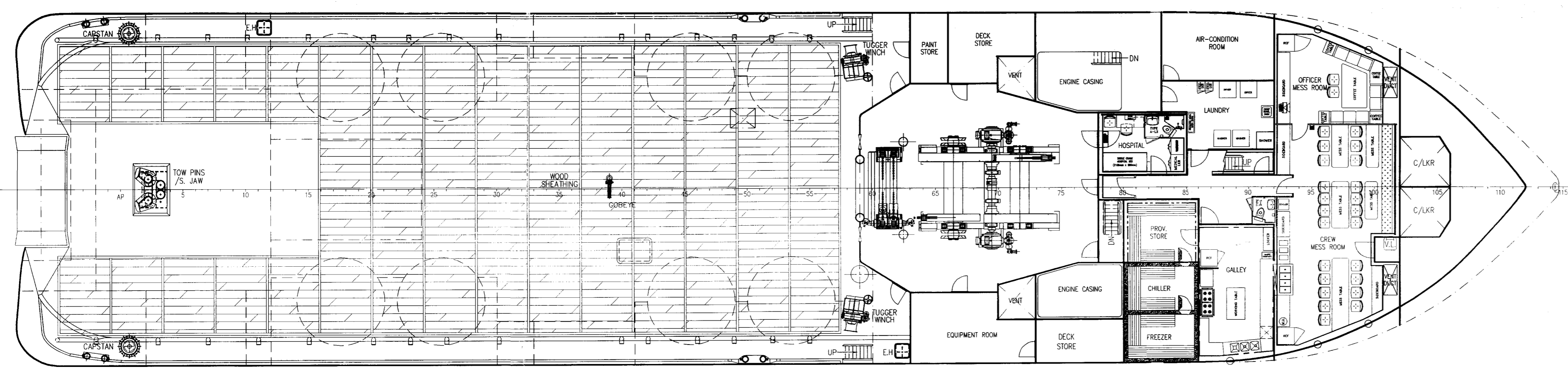
PRINCIPAL DIMENSIONS

LENGTH (O.A.)	75.400 M
LENGTH (W.L.)	72.000 M
LENGTH (B.P.)	67.160 M
BEAM (MLD.)	16.800 M
DEPTH (MLD.)	7.500 M
MAX. DRAFT (MLD.)	6.100 M
DWT. AT 6.10M	2300 TONS
FUEL OIL	1240 M ³
FRESH WATER	490 M ³
DRILL WATER / W.B.	510 M ³
MUD	560 M ³
BASE OIL	130 M ³
CLEAR DECK AREA	500 M ²
DECK CARGO (DECK LOADING = 7.5T/M ²)	800 TONS
DRY BULK TANKS (4x2000 FT ³ =8000 FT ³)	226 M ³
MAIN PROPULSION ENGINE	2 X 4500 KW
SPEED (TRIALS)	14.0 KNOTS
BOLLARD PULL	140 TONS
COMPLEMENT	50 MEN

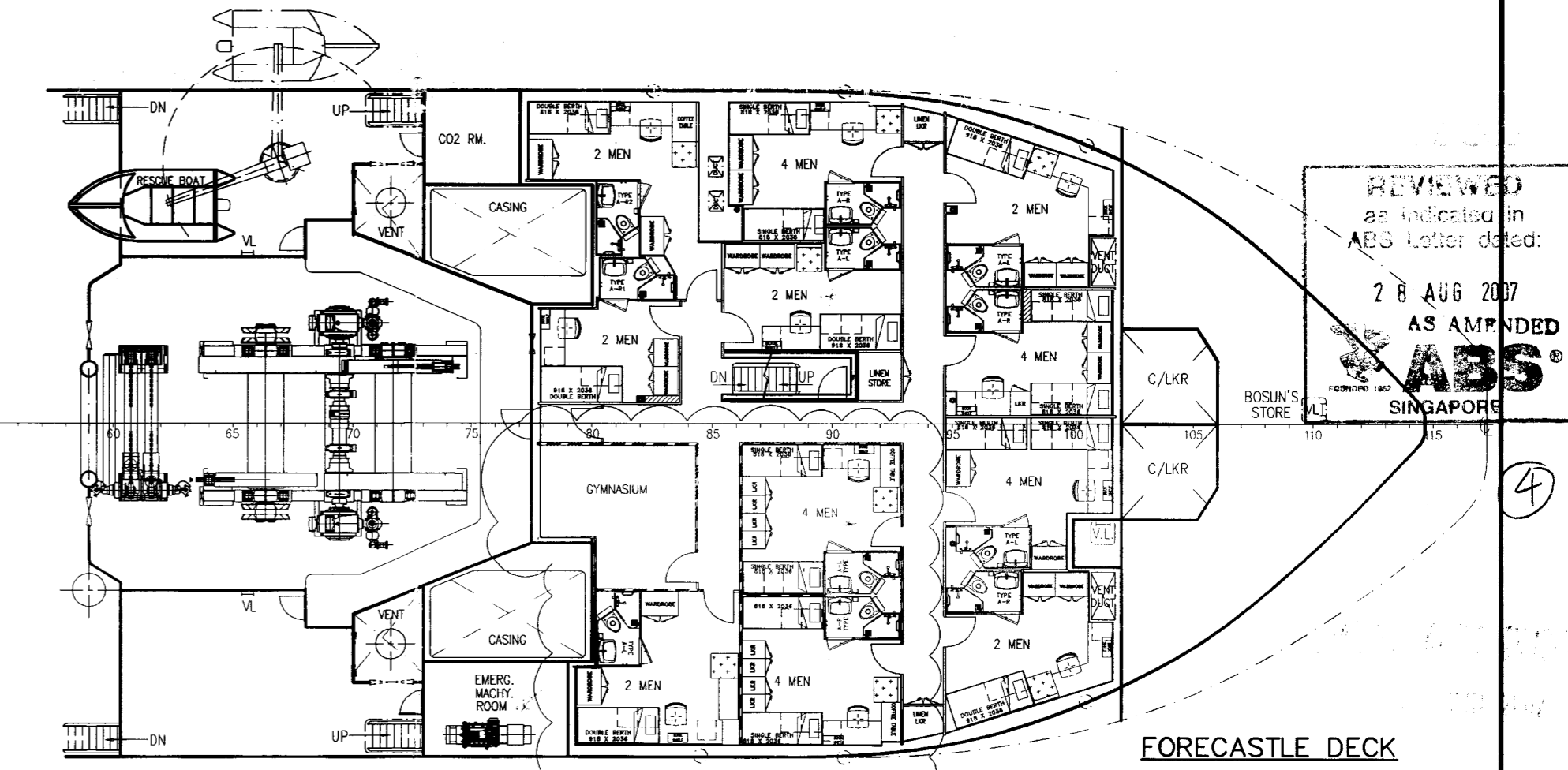
CLASS & NOTATION : ABS * A1 Ⓢ OFFSHORE SUPPORT VESSEL AH, TOWING VESSEL, FIRE FIGHTING VESSEL CLASS 1, * AMS * DPS-2, * ACCU



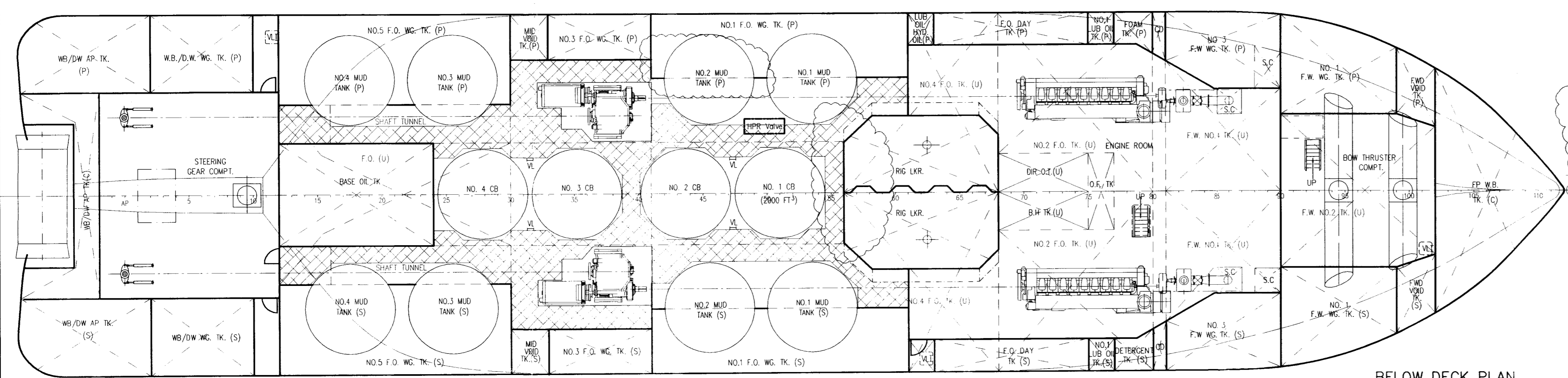
UPPER FORECASTLE DECK



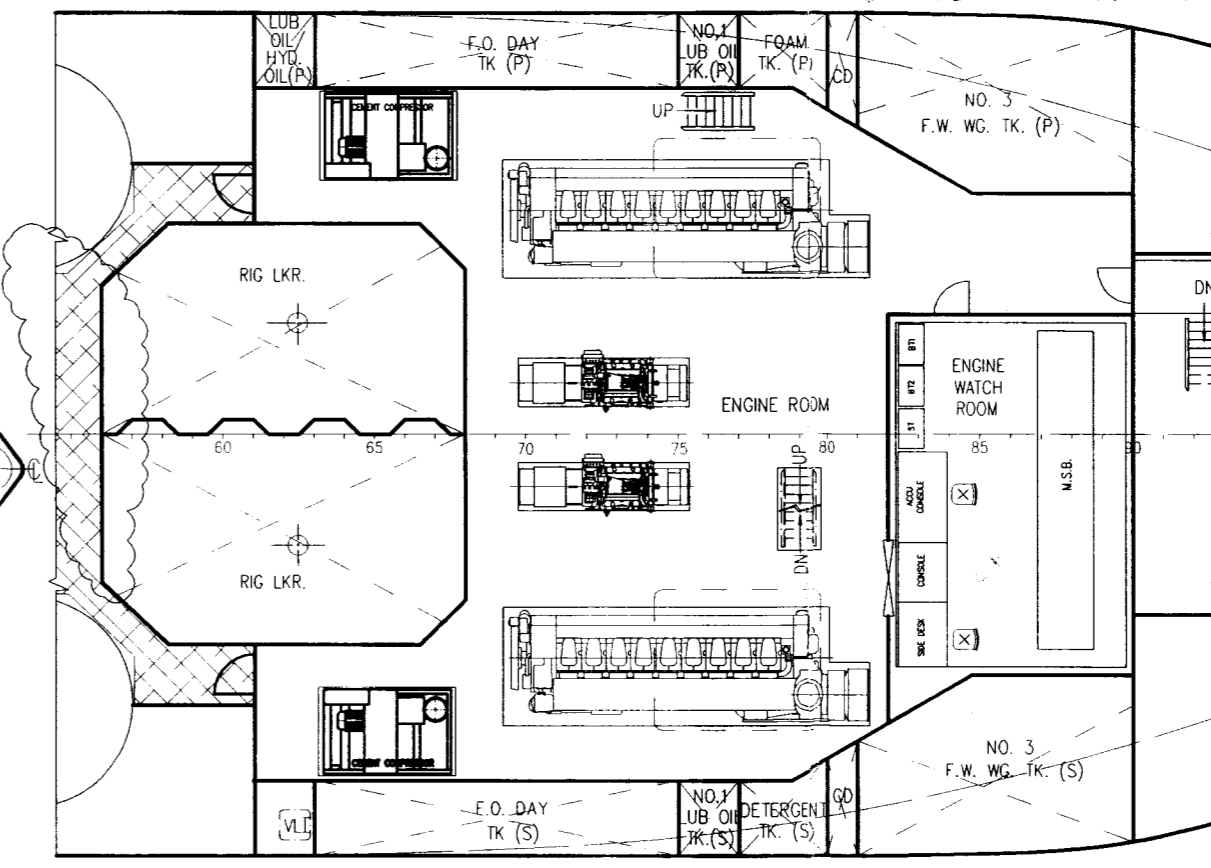
MAIN DECK PLAN



FORECASTLE DECK



BELOW DECK PLAN



TWEEN DECK PLAN

5	CHANGED RIG LKR	ZHANG	23-4-07
4	AREA L.W.O. TOWING WINCH HAS BEEN UPDATED	HICKOP	13-3-07
3	COMPLEMENT INCREASE FM 40 TO 50 MEN	HICKOP	28.09.06
2	UPDATED TOWING WINCH & ACCOM.LAYOUT	LEONARD	31.08.06
1	REARRANGE WHEELHOUSE LAYOUT	HAH	29.08.06
REV.	DETAILS OF MODIFICATION	BY	DATE
BUILDER			
Java JAYA SHIPBUILDING & ENGINEERING PTE LTD			
CONSULTANT			
KC KHAM CHUAN MARINE PTE LTD			
15, HILLVIEW TERRACE, SINGAPORE, 669226 TEL: 67753383 (6 LINES) FAX: 67753788 EMAIL: khamchuan@kcm.com.sg			
PROJECT			
75m ANCHOR HANDLING SUPPLY VESSEL			
TITLE			
GENERAL ARRANGEMENT			
CLASSIFICATION		HULL NO.	
		875/878	
DRAWN	CHECKED	SCALE	DRAWING NUMBER
FEIQIANG		1:150	KCM/Q486(A)-C1
18-03-05			5

THIS DOCUMENT AND THE INFORMATION IT CONTAINS IS COPYRIGHT AND REMAINS THE PROPERTY OF KHAM CHUAN MARINE PTE LTD. IT IS NOT TO BE COPIED IN WHOLE OR IN PART OR DISCLOSED TO ANY THIRD PARTY FOR ANY PURPOSE WHATSOEVER WITHOUT PRIOR WRITTEN CONSENT