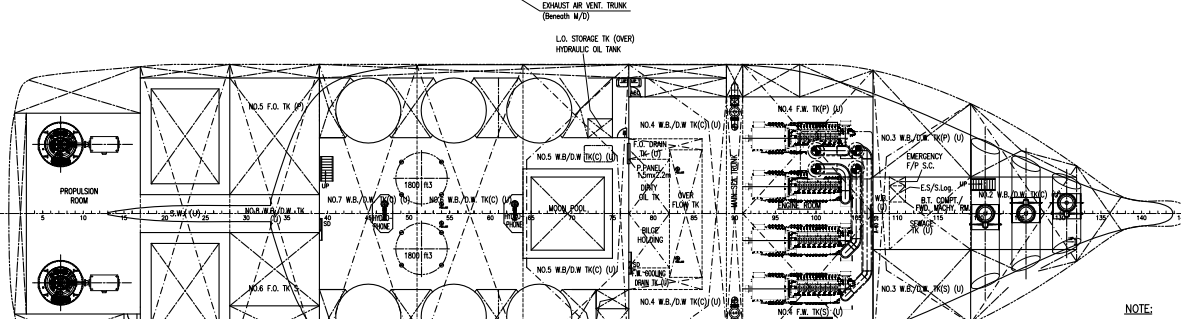
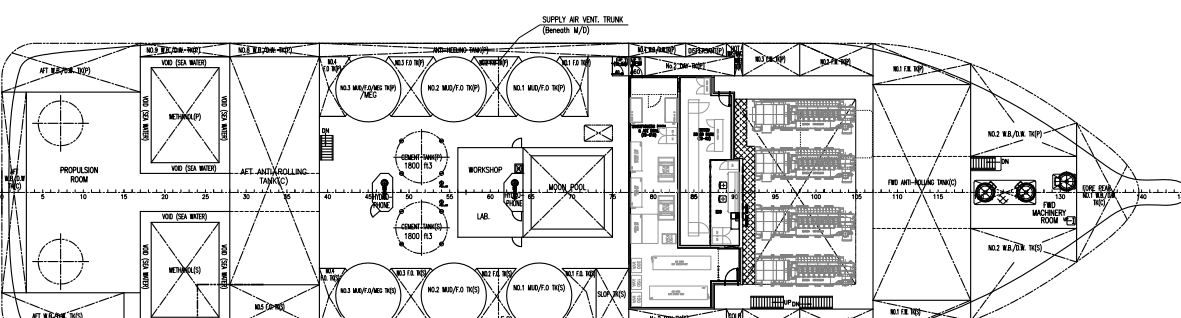
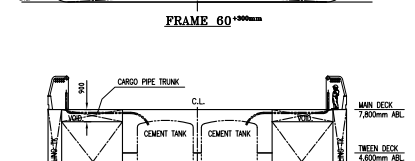
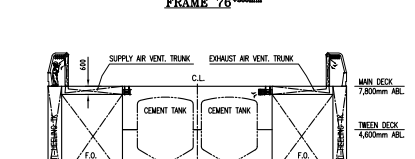
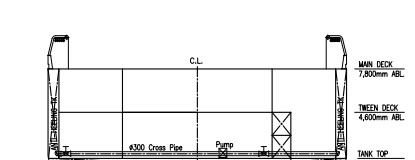
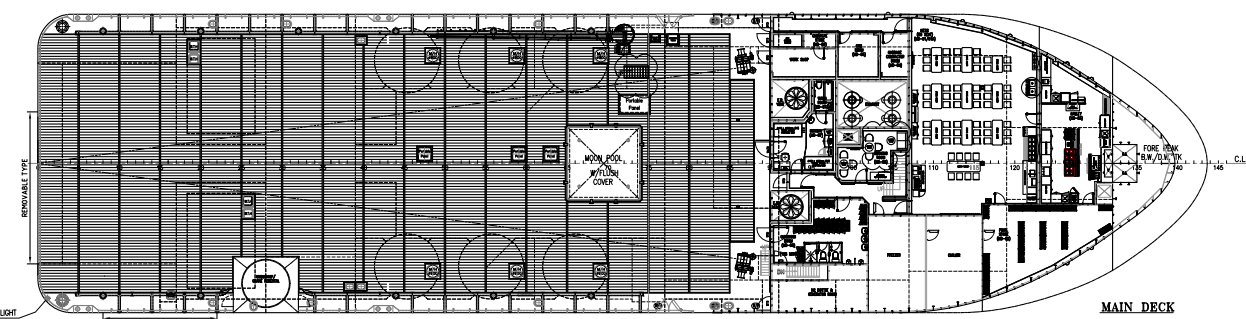
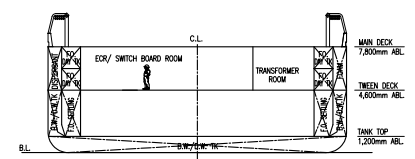
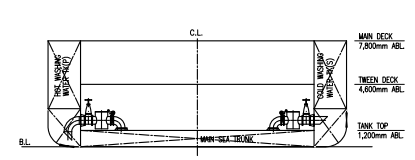
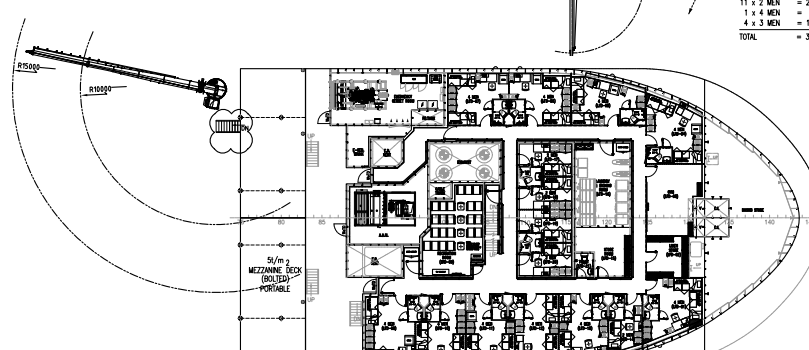
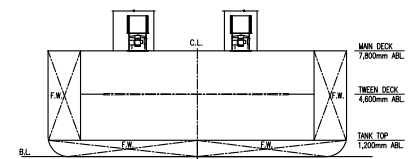


OUTBOARD PROFILE



PRINCIPLE PARTICULARS	
LENGTH OVERALL:	87.80 M.
LENGTH WATERLINE:	83.00 M.
BEAM MOULDED:	22.00 M.
DEPTH MOULDED:	7.80 M.
DRAFT DESIGNED:	5.50 M.
DRAFT MAXIMUM:	5.50 M.
COMPLEMENT:	100 MEN.
(PASSENGER: 000 MEN, CREW: 000 MEN.)	
VESSEL NAME:	-TBA-
FLAG STATE:	-TBA-
PORT OF REGISTRY:	-TBA-
IMO NO.:	-TBA-

CLASS NOTATION:
 + A1(E) Offshore Support Vessel (Supply-HNLS), SPS,
 MLC+ACCUM, HAB(WB), HELIDCK, UWILD, CRC, +AMS, +ACCU,
 +DPS-2, SKP

NOTE: VESSEL COMPLIED TO SPS-2008

88M DP2 ROV SUBSEA OPERATION VESSEL		JAYA REPAIRING & ENGINEERING PTE LTD 910/911 Jaya
GENERAL ARRANGEMENT		SCALE: 1:200 DATE: 2018.08.28 DRAWN: 101
WARTSILA Ship Design 14, Rue de la Liberte 1200 Lausanne, Switzerland Tel: +41 21 622 1234 Fax: +41 21 622 1235 www.wartsilashipdesign.com		WARTSILA PROJECT NO. 40448 DRAWING NO. 101-001
REVISIONS		REV. F1 SHEET 1/1

NOTE:
 1. (***) to be kick plate to be installed on the WH-Deck below the lower rail course (Yard's resp.)